

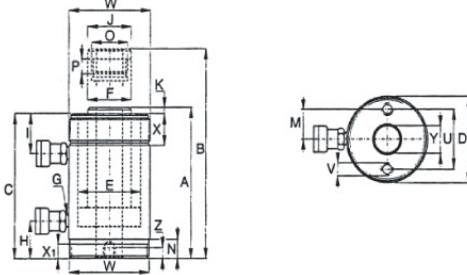


Double-Acting Hydraulic Cylinders

Model: ZRD & ZRDH Series
Stroke: 6" to 20.13"
Capacity: 10-500 tons
Max. Operating Pressure: 10,000 psi



Model: ZRH-306 Model: ZRDH-307



Usage

ZRD & ZRDH series hydraulic cylinders are the perfect for multiple applications where high-powered push and pull cycles are desired.

Special Features

1. The double-acting is designed to produce greater speed and positive control for applications requiring an extra measure of strength, quality, reliability, and safety.
2. Interfaces with automated operations while providing both powered push and pull cycles.
3. All models come with 3/8" NPT fast-flow couplers and dust caps.
4. Standard models come with a threaded collar along with a threaded plunger. The removable hardened saddles protect the plunger during lifting and pressing.
5. Base mounting holes allow easy mounting on almost any fixture.
6. *Hollow Type Cylinders* - The hollow rod can be used for tensioning such as wire, strand, bolts, rods, etc. When used with head cap on, these hollow cylinders can be used as ordinary cylinders.
7. Capacities of 400 tons and higher are available upon request.

Model Number	Stroke (in)	Oil Capacity (in ³)		Cylinder Effective Area (in ²)		Maximum Cylinder Cap. (tons)		Dimensions (in)									Ship Weight (lbs)
		Adv.	Ret.	Adv.	Ret.	Adv.	Ret.	Collapsed Height A	Extended Height B	Outside Diameter D	Cyl. Bore Diameter E	Plunger Diameter F	Base To Adv. Port H	Saddle Diameter J	Saddle Thread O	Collar Thread W	
10 Ton Capacity																	
ZRD-1010	10.00	22.33	8.00	2.23	0.80	10	4	16.13	26.13	2.88	1.69	1.38	1.44	1.38	1-8	2 1/4-14	28
ZRD-1012	12.00	26.80	9.00	2.23	0.80	10	4	18	30	2.88	1.69	1.38	1.44	1.38	1-8	2 1/4-14	31
30 Ton Capacity																	
ZRD-308	8.25	53.67	25.00	6.51	3.00	30	15	15.25	23.5	4	2.88	2.13	1.44	2.00	1 1/2-16	3 5/16-12	40
ZRD-3014	14.50	92.70	43.00	6.51	3.00	30	15	21.63	36.13	4	2.88	2.13	1.56	2.00	1 1/2-16	3 5/16-12	64
ZRDH-307	7.00	50.51	33.00	7.22	4.71	30	23	13.00	20.00	4.5	3.5	2.5	1	2.5	1 13/16-16	4 1/2-12	48
ZRDH-3010	10.13	73.10	47.70	7.22	4.71	30	23	17.00	27.13	4.5	3.5	2.5	1	2.5	1 13/16-16	4 1/2-12	60
50 Ton Capacity																	
ZRD-506	6.13	67.77	21.00	11.06	3.40	50	10	13.06	19.19	5	3.75	3.13	1.13	2.81	1-12	5-12	67
ZRD-5013	13.13	145.17	44.00	11.06	3.40	50	10	20.06	33.19	5	3.75	3.13	1.13	2.81	1-12	5-12	115
ZRD-5020	20.13	222.56	68.00	11.06	3.40	50	10	28.88	49.00	5	3.75	3.13	2.25	2.81	1-12	5-12	150
60 Ton Capacity																	
ZRDH-603	3.50	44.57	29.21	12.73	8.37	60	40	9.75	13.25	6.25	4.88	3.63	1.25	2.50	2 3/4-16	6 1/4-12	62
ZRDH-606	6.50	82.77	54.24	12.73	8.37	60	40	12.75	19.25	6.25	4.88	3.63	1.25	2.50	2 3/4-16	6 1/4-12	78
ZRDH-6010	10.12	128.94	84.49	12.73	8.37	60	40	17.25	27.38	6.25	4.88	3.63	1.25	2.50	2 3/4-16	6 1/4-12	101
75 Ton Capacity																	
ZRD-756	6.13	97.58	29.00	15.92	4.90	75	17	13.69	19.81	5.75	4.5	3.75	1.19	2.81	1-12	5 3/4-12	92
ZRD-7513	13.13	209.00	64.00	15.92	4.90	75	17	20.69	33.81	5.75	4.5	3.75	1.19	2.81	1-12	5 3/4-12	150
100 Ton Capacity																	
ZRD-1006	6.63	136.93	63.00	20.65	9.60	100	48	14.06	20.69	7	5.13	3.75	1.5	3.00	1 3/4-12	6 7/8-12	135
ZRD-10013	13.13	271.17	126.00	20.65	9.60	100	48	20.63	33.75	7	5.13	3.75	1.5	3.00	1 3/4-12	6 7/8-12	205
ZRD-10018	18.13	374.44	174.00	20.65	9.60	100	48	27.06	45.19	7	5.13	3.75	1.63	3	1 3/4-12	6 7/8-12	260
150 Ton Capacity																	
ZRD-1502	2.25	69.11	33.00	30.71	14.80	150	74	7.72	9.96	8	6.25	4.5	0.88	4.49	-	-	110
ZRD-1506	6.13	188.28	91.00	30.71	14.80	150	74	15.19	21.31	8	6.25	4.5	1.94	4.49	3 3/8-16	8-12	205
ZRD-15013	13.13	403.27	194.00	30.71	14.80	150	74	22.20	35.31	8	6.25	4.5	1.94	4.49	3 3/8-16	8-12	275
ZRD-15032	32.13	986.84	475.00	30.71	14.80	150	74	43.94	76.06	8	6.25	4.5	3	4.49	3 3/8-16	8-12	525
200 Ton Capacity																	
ZRD-2006	6.00	265.28	135.00	44.21	22.50	200	112	16.94	22.94	9.75	7.5	5.25	2.25	5.25	-	-	325
ZRD-20013	13.00	574.78	293.00	44.21	22.50	200	112	23.94	36.94	9.75	7.5	5.25	2.25	5.25	2 1/2-12	9 3/4-12	440
300 Ton Capacity																	
ZRD-3006	6.00	425.56	228.00	70.93	38.00	300	188	19.13	25.13	12.25	9.5	6.5	3.5	6.5	2 1/2-12	12 1/4-12	441